

3.5 Problems

Curve Sketching

Example 1. How can you tell if a function is even or odd

(a) by looking at the equation?

(i) $f(x)$ is even if $f(x) = f(-x)$

(ii) $f(x)$ is odd if $f(x) = -f(-x)$

(iii) If (i) or (ii) ~~do not~~ do not hold
 f is neither even or odd.

(b) by looking at the graph?

(i) f ~~is~~ is even if it is symmetric around line $x=0$

(ii) f is odd if $\underbrace{\text{it}}$ has 180° rotation symmetry.
 its graph

Example 2. How can you tell the difference between a vertical asymptote and a hole in a graph by looking at the equation of a function?

For rational functions, a hole arises if both numerator + denominator has zero at same x . Otherwise a zero in the denominator implies a vertical asymptote.

MTH132 - Examples

Example 3. Use "the guidelines" in your notes to sketch a detailed graph of each of the following:

(a) $f(x) = x^3 - 12x^2 + 36x$

$$f' = 3x^2 - 24x + 36 \quad \text{Critical points } f' = 0$$

$$f'' = 6x - 24 \quad \Leftrightarrow x^2 - 8x + 12 = 0$$

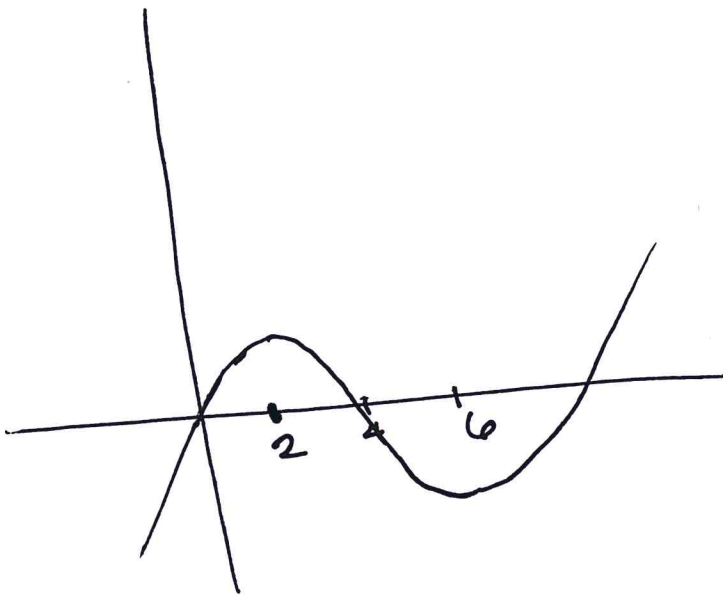
$$x = \frac{8 \pm \sqrt{64 - 48}}{2} = 6, 2$$

Inflexion point $f'' = 0 \Leftrightarrow x = 4$.

$$f'' > 0 \text{ on } (4, \infty)$$

$$f'' < 0 \text{ on } (-\infty, 4)$$

local max $(2, f(2))$ local min $(6, f(6))$



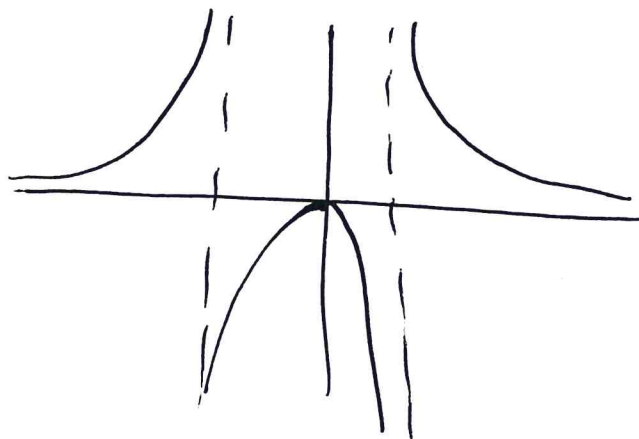
$$(b) f(x) = \frac{2x^2}{x^2 - 1}$$

$$f' = \frac{4x(x^2-1) - 2x^2(2x)}{(x^2-1)^2} = \frac{-4x}{(x^2-1)^2}$$

$$f' = 0 \iff x = 0 \quad f' \begin{cases} < 0 & x > 0 \\ > 0 & x < 0 \end{cases}$$

$$f'' = \frac{-4(x^2-1)^2 + 4x(2 \cdot 2x(x^2-1))}{(x^2-1)^4} = \frac{4(3x^2+1)(x^2-1)}{(x^2-1)^4}$$

$$f'' \begin{cases} < 0 & \text{on } x \in (-1, 1) \\ > 0 & \text{on } x \in (-\infty, -1) \cup (1, \infty) \end{cases}$$



local max @ $(0, f(0))$